

# Ethnography Pigs



## Ethnography, Pigs

## Ethnography, Pigs

No.	Breed Records	Breeds to study	Breeds to recognize
1	Landrace	Duroc	Gascon
2	Pietrain	Hampshire	Sarda
3	Large White	Meishan	Mangalitza
4		Jinhua	Schwabian-Hall
5		Basque	Saddleback
6		Ibérique	Vietnamese Potbellied
7			
8			
9			
10			

## Table des matières

### Breed Records

<i>Belgian Landrace</i> .....	4-5
<i>Pietrain</i> .....	6-7
<i>Large White</i> .....	8-9

### Breeds to study

<i>Duroc</i> .....	10
<i>Hampshire</i> .....	11
<i>Meishan</i> .....	12
<i>Jinhua</i> .....	13
<i>Basque</i> .....	14
<i>Ibérique</i> .....	15

### Breeds to recognize

<i>Gascon</i> .....	16
<i>Sarda</i> .....	16
<i>Mangalitza Blonde</i> .....	17
<i>Mangalitza Swallow-bellied</i> .....	17
<i>Mangalitza Red</i> .....	18
<i>Schwabian-Hall</i> .....	18
<i>Saddleback</i> .....	19
<i>Vietnamese Potbellied</i> .....	19

## Belgian Landrace

### Origin:

This breed was created in Belgium. It was only from the 1970s, that the breed was homogeneous **enough**<sup>1</sup> to be called “*Belgian Landrace*”.

### History:

The breed as it looks now is the result of the crossbreeding of many different breeds coming from the UK, Germany and the Netherlands. Before the second World War, German breeds improved by British influence were introduced to the **native stock**<sup>2</sup>. After this, the *Dutch Landrace* and other breeds were also incorporated into the **blood-line**<sup>3</sup> to strengthen it after the second World War. Today used in many different countries, the *Belgian Landrace* is also one of the "four major commercial breeds" in France.



### Size:

It is a homogenous white breed with small, **drooping ears**<sup>4</sup>. It is medium sized and has a well-proportioned body (not too elongated) with very **sound feet**<sup>5</sup> and legs. It is known to be **heavily**<sup>6</sup> muscled and to be considerably large.

### Production parameter and Performed zootechnics:

*Belgian Landrace* **sows**<sup>7</sup> are often bred to *Piértrain* **boars**<sup>8</sup> to produce crossbreds for market. *Piértrain* is used as an ameliorating breed for meat production. The crossbred sows are then often bred back with *Belgian Landrace* boars.



### Temperament:

They have good fertility and maternal abilities, and milk well until **early weaning**<sup>9</sup>. They perform well in confinement systems.

### Pathological/Anatomical particularities:

They have very well-developed **hams**<sup>10</sup>. It is a double-muscled breed (“**culards**”)<sup>11</sup>. Therefore, *Landraces* are susceptible to stress leading to pale, soft and exudative (**PSE**)<sup>12</sup>. Since 1985, the breed has

<sup>1</sup> **Enough** = Assez

<sup>2</sup> **Native stock** = Souche indigène

<sup>3</sup> **Bloodline** = Lignée

<sup>4</sup> **Drooping ears** = Oreilles tombantes

<sup>5</sup> **Sound feet** = Pieds sains

<sup>6</sup> **Heavily** = Fortement

<sup>7</sup> **Sows** = Truies

<sup>8</sup> **Boars** = Verrats

<sup>9</sup> **Early weaning** = Sevrage précoce

<sup>10</sup> **Hams** = Jambons

<sup>11</sup> **Culards** = Culards (anomalie d'origine génétique, se traduit par une forte hypertrophie musculaire)

<sup>12</sup> **PSE (Pale, Soft and Exudative)** = Pâle, mole et exsudative

## Ethnography, Pigs

included two types: the stress-positive type and the stress-negative type (BN) which does not develop the PSE meat.

### **Economy and Ethics:**

*Belgian Landrace* has been especially selected for the production of lean meat of quality fresh pork<sup>13</sup>, which is the product most requested by consumers in Belgium and many other Northern European countries. They show an excellent carcass conformation with a carcass yield of 65%. The meat is lean and tender.

### **Notes:**



---

<sup>13</sup> Pork = Viande de porc

# Pietrain

### Origin:

This breed is originated from Belgium in the village of Piétrain.

### History:

In the 1950s, the *Pietrain* became **broadly**<sup>14</sup> popular in Belgium because of its excellent meat production breed characteristics. Until the 1970s, *Pietrains* constituted about 30% of the Belgian pig population, but then the breed was surpassed in popularity by the *Landrace*, which features better qualities like the **growth rate**<sup>15</sup>, the fertility and the conformation.



### Size:

The *Pietrain* has a medium size and is **stocky**<sup>16</sup>. It also has short strong **limbs**<sup>17</sup> and a **broad**<sup>18</sup> back. Their coat is white with black **spots**<sup>19</sup>.

### Production parameter and Performed zotechnics:

It has good qualities such as a favourable feed conversion index of 2.8 (Indicating that only 2.7 kg of feed needs to be given to produce 1 kg of meat) , an excellent carcass yield and a high percentage of lean meat in carcass.

### Temperament:

The sows of this breed are prolific but they do not have milk production and marked mothering breed characteristics.

### Pathological/Anatomical particularities:

It has a spotted coat and **forward-pointing ears**<sup>20</sup>. Its back muscles are terribly developed. This pig is a double-muscled breed (which are called cullards). Because of this *Pietrain* pigs are vulnerable to stress resulting from PSE and “stress-negative” **strains**<sup>21</sup> are being selected.



### Economy and Ethics:

They are used to improve the quality of **marked swine**<sup>22</sup> while boars are used on sows of other

<sup>14</sup> **Broadly** = Largement

<sup>15</sup> **Growth rate** = Taux de croissance

<sup>16</sup> **Stocky** = Trapu

<sup>17</sup> **Limbs** = Membres

<sup>18</sup> **Broad** = Large

<sup>19</sup> **Spots** = Taches

<sup>20</sup> **Forward-pointing ears** = Oreilles pointant vers l'avant

<sup>21</sup> **Strains** = Souches

<sup>22</sup> **Marked swine** = Porc marqué

## Ethnography, Pigs

breeds, in particular the *Belgian Landrace*. In Germany they are commonly used for crossbreeding.

**Notes:**



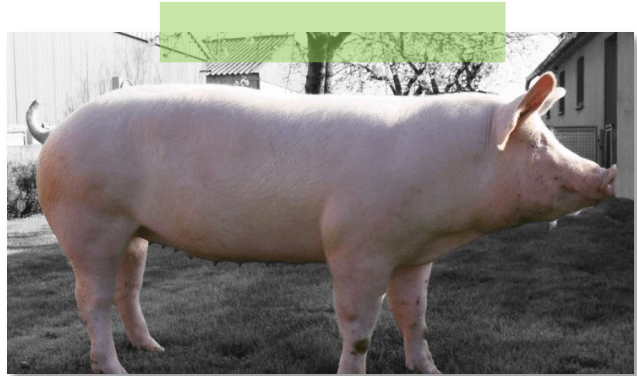
## Large White

### Origin:

This breed is originated from the northeast of England, more precisely from the **county**<sup>23</sup> of Yorkshire.

### History:

First seen in 1831 at the Windsor Royal Show. The *large white* does well in intensive **husbandry**<sup>24</sup> but was previously developed as an active outdoor breed. They were quickly marketed all over the world thanks to their excellent ability to cross and improve other pig breeds. It was introduced in the United States shortly before the 20<sup>th</sup> century. Unfortunately, this breed has not had as much success with us... It does not ideally meet the criteria of our Belgian market (carcass conformation, quality cuts,...).



### Size:

Size is large and it is very heavy. The *large white* has long limbs and big shoulder. The sow is 85 cm tall and weighs 350 kg, the boar is 95 cm tall and weighs 400 kg. **However**<sup>25</sup>, it can also be used as **light-weight**<sup>26</sup> pig! This breed has white skin.

### Production parameter and Performed zootechnics:

It is used all over the world in many crosses. Its success is caused by the quality of the sow and the boar! The sow has a large litters and high milk production making it the leading mother breed for commercial pig production. The male improves the quality of a **pig breeding**<sup>27</sup> (of the following generations). **Average-sized**<sup>28</sup> hams, carcass conformation not ideal for Belgium, as well as its lean meat content.



### Temperament:

She has excellent maternal qualities and can **withstand**<sup>29</sup> climatic variations (hardy).

### Pathological/Anatomical particularities:

The *large white* has an exceptional **growth rate**<sup>30</sup> and has **concave nose**<sup>31</sup>. Without forgetting, he has forward-pointing ears.

<sup>23</sup> **County** = Comté

<sup>24</sup> **Husbandry** = Elevage

<sup>25</sup> **However** = Cependant

<sup>26</sup> **Light-weight** = Poids léger

<sup>27</sup> **Pig breeding** = Elevage porcin

<sup>28</sup> **Average-sized** = Taille moyenne

<sup>29</sup> **Withstand** = Résister

<sup>30</sup> **Growth rate** = Taux de croissance

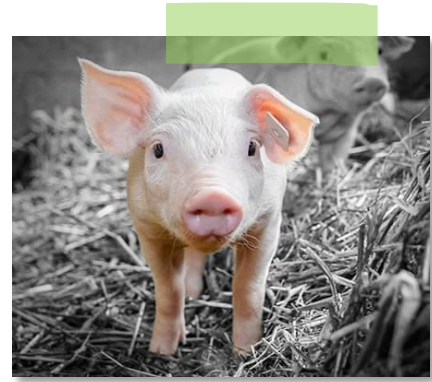
<sup>31</sup> **Concave nose** = Nez concave

## Ethnography, Pigs

### Economy and Ethics:

They are commonly used in hybrid or crossbreeding. The most popular cross is *Large White* and *Landrace*, a third breed like *Duroc* or *Hampshire* is often used as a terminal sire<sup>32</sup>. The pigs produced meet consumer requirements for low fat and high lean meat<sup>33</sup> content.

### Notes:



---

<sup>32</sup> Sire = Père (géniteur)

<sup>33</sup> Lean meat = Viande maigre

## Duroc

**From:** United States

**Coat:** Variation in color; very light golden, almost yellow color, to a very dark red (**mahogany**)<sup>34</sup>

**Character:** Very robust, good maternal abilities

**Alimentation:** /

**Production and characteristics:**

- Competitive for carcass leanness and food efficiency
- Excellent milk production
- Italian LW X D or Italian L X D for the production of **heavy**<sup>35</sup> pigs, slaughtered at a live weight of 160-170 kg
- High quality hams (Parma)



**Notes:**

---

<sup>34</sup> Mahogany = Acajou

<sup>35</sup> Heavy = Lourd

## Hampshire

**From:** USA

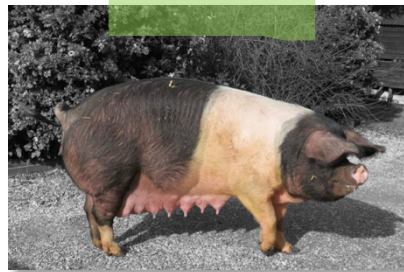
**Coat:** Fine black coat with a white belt, includes the shoulders and the forelegs<sup>36</sup>

**Character:** Good maternal attitude, hardy<sup>37</sup>, resistant to disease

**Alimentation:** /

**Production and characteristics:**

- Milk production, piglets strong and well-grown<sup>38</sup>
- Father of crossbred pigs
- Produce large quantities of lean meat
- The meat becomes too acidic (<5,5)
- Carcass is among<sup>39</sup> the highest in quality and quantity of meat



**Notes:**

---

<sup>36</sup> Forelegs = Pattes antérieures

<sup>37</sup> Hardy = Robuste

<sup>38</sup> Well-grown = Bien développés

<sup>39</sup> Among = Parmi

## Meishan

**From:** Region of lakes and valleys, China

**Coat:** Light gray<sup>40</sup> to dark gray

**Character:** Resistant to some diseases, maternal instinct

**Alimentation:** Consume large amounts of roughage<sup>41</sup>, farm by-products<sup>42</sup>, water plants

**Production and characteristics:**

- Early sexual maturity
- High prolificacy (15-16 piglets)
- Very good taste
- Slow growing and fat
- Fat<sup>43</sup> carcass
- LW X M and L X M have a 30% higher prolificacy compared to European breeds



**Notes:**

---

<sup>40</sup> Gray = Gris

<sup>41</sup> Roughage = Fourrage grossier

<sup>42</sup> Farm by-products = Sous-produits de la ferme

<sup>43</sup> Fat = Grosse

## Jinhua

**From:** China

**Coat:** White body, with black at the head and rump

**Character:** Resistant to some diseases, maternal instinct

**Alimentation:** Consume large amounts of roughage

**Production and characteristics:**

- Early sexual maturity
- High prolificacy (13 piglets)
- Very good taste, good quality meat (Jinhua ham, international market)
- Slow growing and fat
- Fat carcass
- Thin skin, fine bones and tender meat



**Notes:**

## Basque

## Ethnography, Pigs

**From:** French

**Coat:** Pied black and white coat, black head, rump and hind

**Character:** Very rustic, agile, **inquisitive**<sup>44</sup>

**Alimentation:** herbs, seasonal fruits (**chestnuts**<sup>45</sup>, **acorns**<sup>46</sup>, **beechnuts**<sup>47</sup>) and food supplement of cereal

**Production and characteristics:**

- Fine, red, savoury meat
- Famous “Jambon de Bayonne”



**Notes:**

---

<sup>44</sup> **Inquisitive** = Curieux

<sup>45</sup> **Chestnuts** = Châtaignes

<sup>46</sup> **Acorns** = Glands

<sup>47</sup> **Beechnuts** = Faines

## Ibérique

**From:** Spain

**Coat:** Pigmented skin and coat. Coat colour can vary from black to reddish<sup>48</sup>, depending on the specific variety

**Character:** /

**Alimentation:** Forage in the forest, may be supplemented with commercial feedstuffs.

**Production and characteristics:**

- Slow growth and low prolificacy
- “Jamón ibérico”, high quality ham
- Meat is classified in 3 categories (different finishing): Montanera or bellota, Recebo, Cebo or Campo
- Remarkable fat deposition, covering<sup>49</sup> and intramuscular (marbling)
- Slaughter weight 160 kg, ham weighing 7 kg



**Notes:**

---

<sup>48</sup> Reddish = Rougeâtre

<sup>49</sup> Covering = Couvrant

## Ethnography, Pigs

### Gascon



Notes:



### Sarda



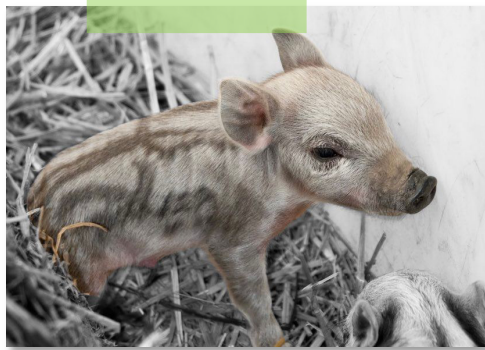
Notes:



## Mangalitza Blonde



Notes:



## Mangalitza Swallow-bellied



Notes:



## Mangalitzza Red



Notes:



## Schwabian-Hall



Notes:



## British Saddleback



Notes:



## Vietnamese Potbellied



Notes:

